



# The University of Belize and Opportunities for Collaboration

Professor Emeritus Clement K. Sankat  
President, UB

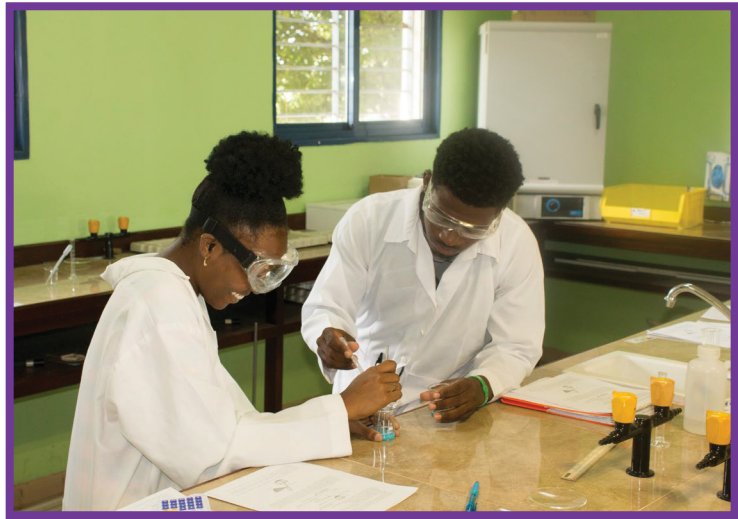
COBEC 2019 Winter Conference  
San Pedro Junior College  
Belize  
February 7, 2019

# The University of Belize at a Glance

- Established in 2000 by the University of Belize Act
- Amalgamation of 5 Colleges
- Four faculties: Education and Arts; Management and Social Sciences; Nursing, Allied Health and Social Work; Science and Technology.
- Two centers: Environmental Research Institute and Regional Language Center
- Administrative Staff - 315; Faculty – 134; Adjunct - 331

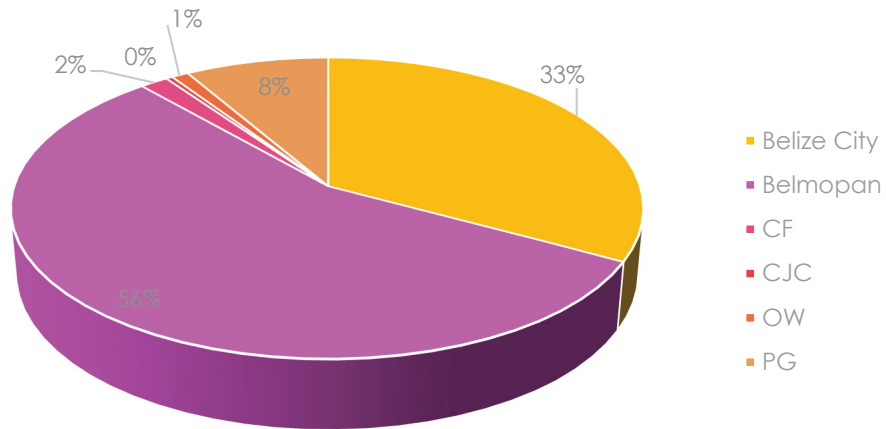


# Serving the Entire Country of Belize

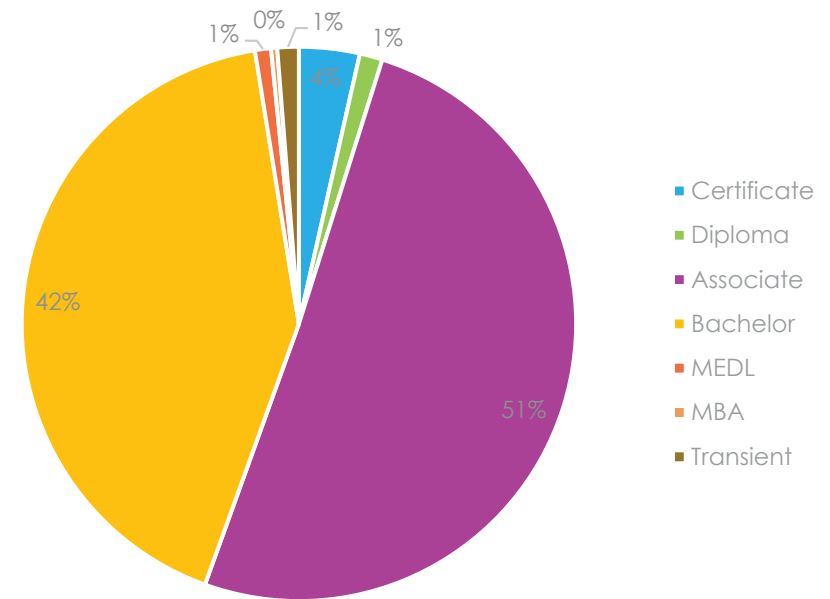


# 5, 032 Students for 2018-1

## Students by Campus

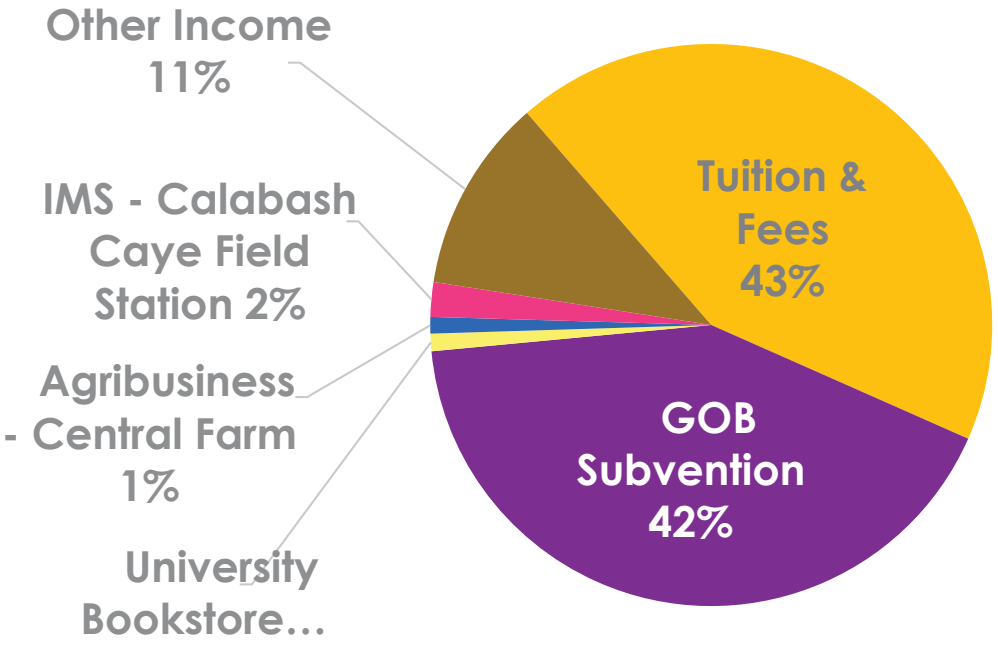


## Students by Degree Level

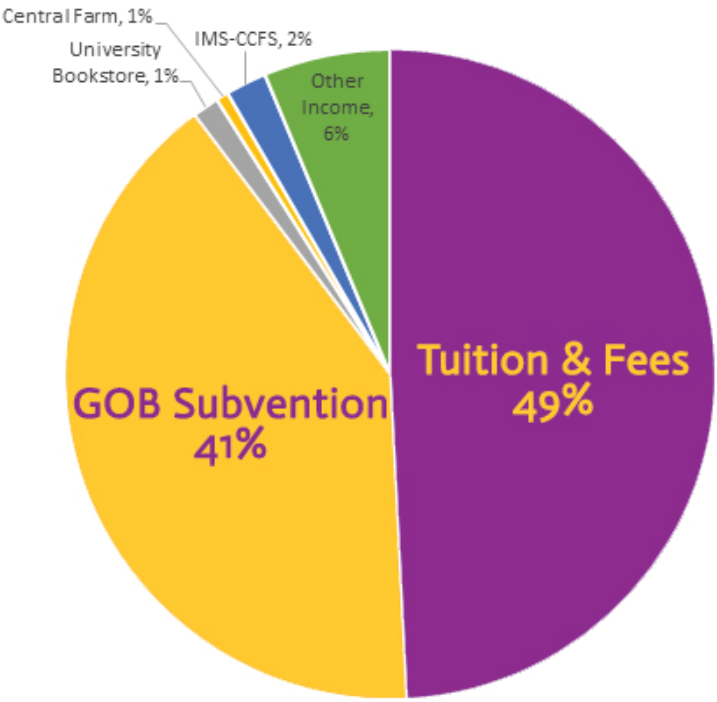


# Finance: Income Sources

AUG 16 – Jul 17



Aug 17 - Jul 18



# Major Program Areas

Faculty	Associate	Bachelor	Masters
<b>Faculty of Education and Arts</b>	<ul style="list-style-type: none"> <li>• Early Childhood Education</li> <li>• Primary Education</li> </ul>	<ul style="list-style-type: none"> <li>• English</li> <li>• History</li> <li>• Spanish Education</li> <li>• Bachelor in Education (Different Disciplines)</li> </ul>	<ul style="list-style-type: none"> <li>• Education Leadership</li> </ul>
<b>Faculty of Management and Social Sciences</b>	<ul style="list-style-type: none"> <li>• Business Studies</li> <li>• Tourism Studies</li> </ul>	<ul style="list-style-type: none"> <li>• Accounting</li> <li>• Business Administration – Marketing, Management and Finance</li> </ul>	<ul style="list-style-type: none"> <li>• Business Administration</li> </ul>
<b>Faculty of Nursing, Allied Health and Social Work</b>	<ul style="list-style-type: none"> <li>• Midwifery (Certificate)</li> </ul>	<ul style="list-style-type: none"> <li>• Medical Laboratory Science</li> <li>• Nursing</li> <li>• Pharmacy</li> <li>• Social Work</li> </ul>	
<b>Faculty of Science and Technology</b>	<ul style="list-style-type: none"> <li>• Agriculture</li> <li>• Engineering</li> </ul>	<ul style="list-style-type: none"> <li>• Agriculture</li> <li>• Marine Biology</li> <li>• Information Technology</li> <li>• Natural Resource Management</li> <li>• Statistics</li> </ul>	

**54 Programs**



University of Belize



A Transformational Leap for the University of Belize  
Vision 2022

# The Senior Management Team 2018



President  
**Professor Emeritus  
Clement Sankat**



Vice President  
**Dr. Mariot Simon**

## Administration



Secretary  
Senior Management  
**Denise Robinson**



Finance  
**Sherlene Julien**



Human Resources  
**Hertha Gentle**



Physical Plant  
**Francis Burns**



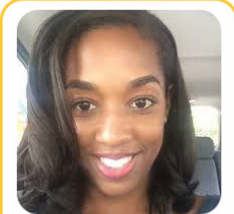
Public Safety  
**John Salam**



ICT  
**Abdulaziz Sanderson**



Business Development Officer  
**Arnulfo Kantun**



Marketing & Communications  
**Santree Sandiford**

## Deans & Directors



FEA  
**Dr. Nestor Chan**



FMSS  
**Dr. Bernard Watler**



FST  
**Juliane Pasos**



FNAHSW  
**Leolin Swift-Castillo**



Student Affairs  
**Dr. Jean Perriott**



Registrar  
**Rose Pineda**



ERI  
**Dr. Leandra Ricketts**



RLC  
**Luigie Cruz**



UB Toledo  
**Roy Polonio**



UB Central Farm  
**Dr. Roxanna Alvarez**



## Vision

The intention is the transformation of the University as a recognized university in the Region and as the premier degree-granting university in Belize, which is student-centred and which responds to the national development needs and priorities of the country and its aspirations of higher education.

Education is the vehicle for personal and social development and the means whereby students examine values and forge their identities, becoming successful individuals and contributing members of their communities.

Dr. Santos Mahung  
President at UB: August 2007 – September 2010

## Mission

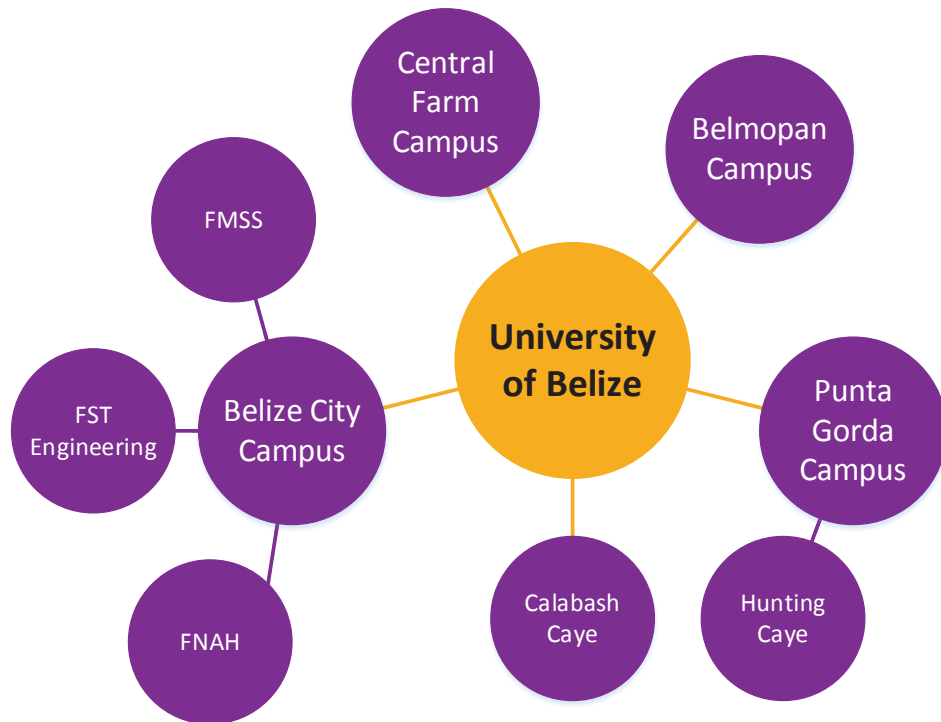
The University of Belize is a national, autonomous and multi-location institution committed to excellence in higher education, research and service for national development. As a catalyst of change it provides relevant, affordable and accessible educational and training programs that address national needs based on principles of academic freedom, equity, transparency, merit and accountability.

## Core Values

The Core Values of the Strategic Plan provide the principles that guide UB's implementation of the goals and objectives, to be promoted as part of the culture of the institution:

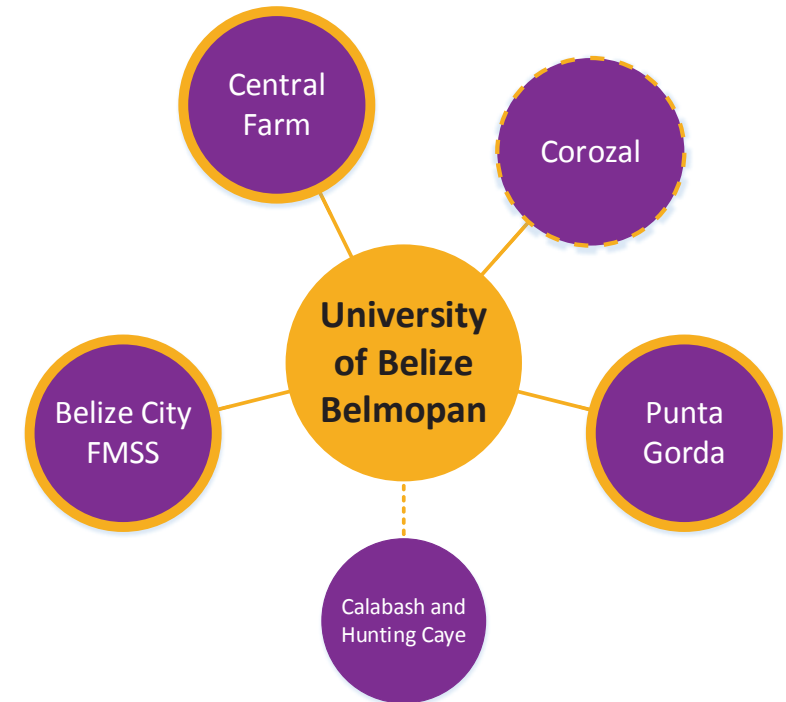
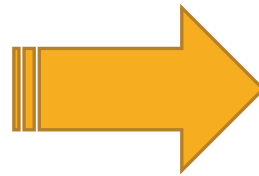
- Excellence and Merit
- Relevance and Contribution to National Needs
- Spirit of Inquiry and Academic Freedom
- Diversity and Equitable Access
- Sustainability and Future Orientation
- Accountability and Transparency
- Empowerment and Initiative

## WHERE WE ARE



## WHERE WE WANT TO BE?

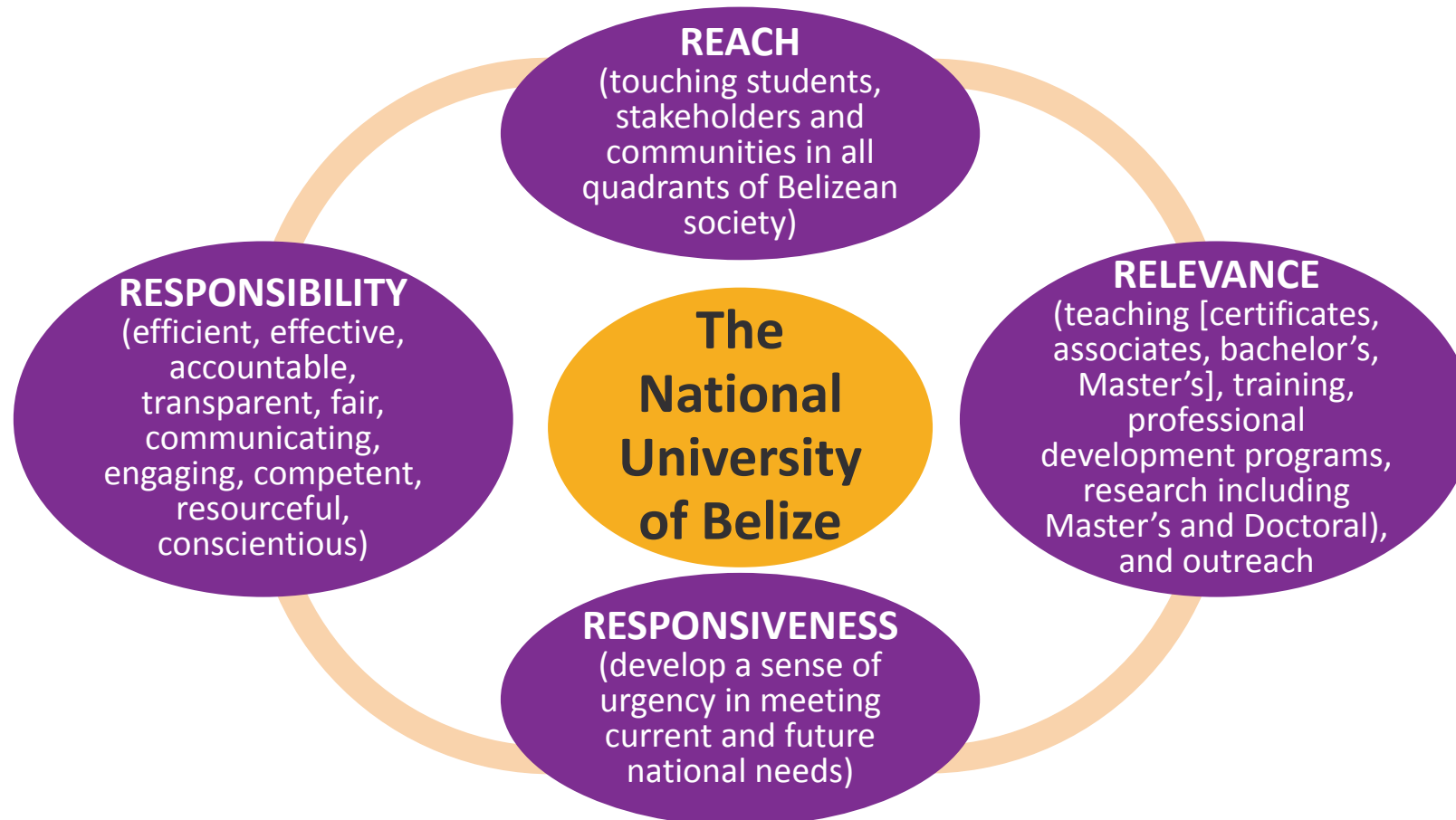
A consolidated University in the University Town of Belmopan



# THE TRANSFORMATIONAL PLAN

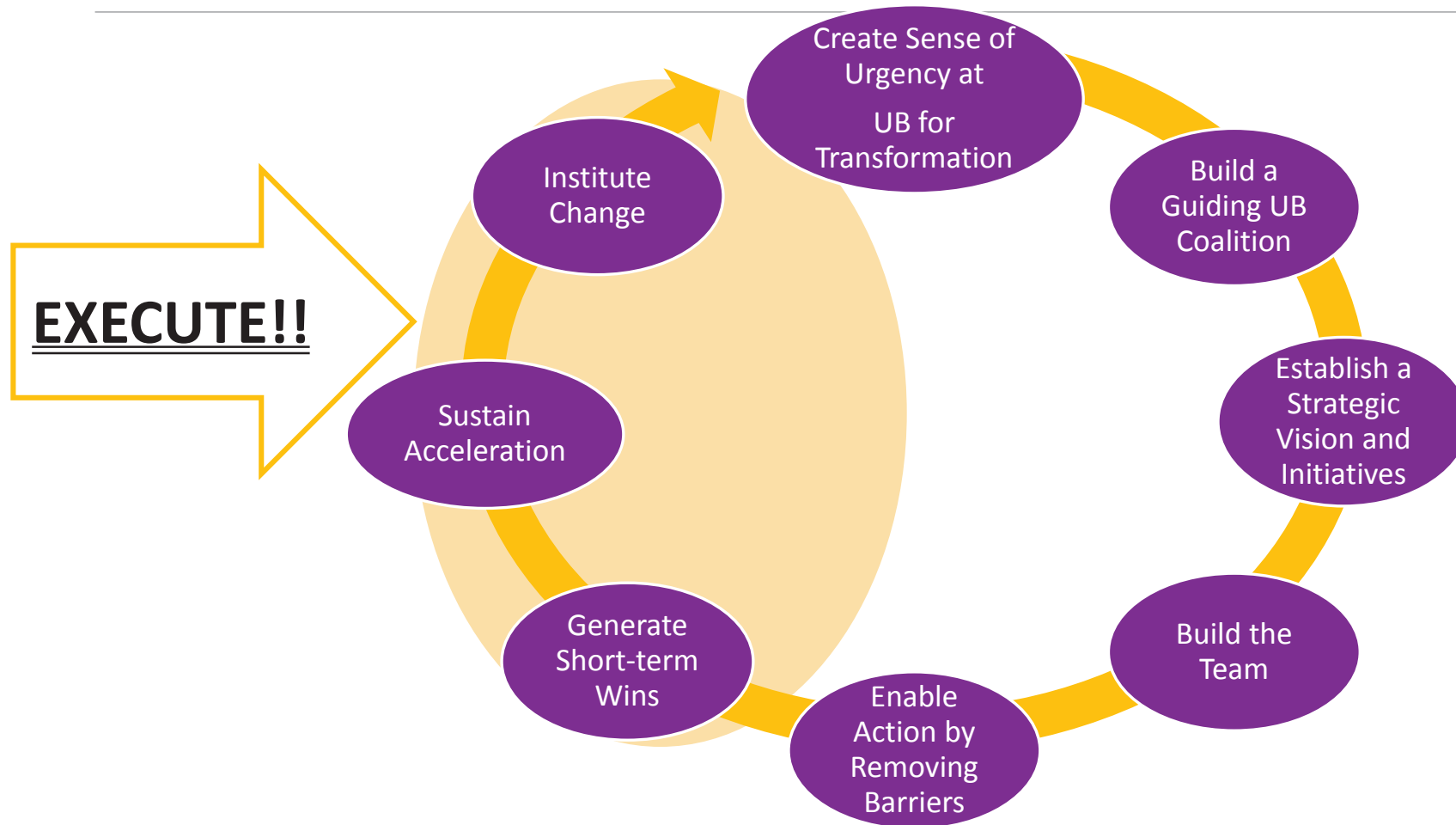
## THE WAY FORWARD 2017-2022

Our actions are focused on the 4 Rs:



# The Pathway to Change: The Focus Now on Execution at UB

---



# Undergraduate Programmes – Ensuring Access

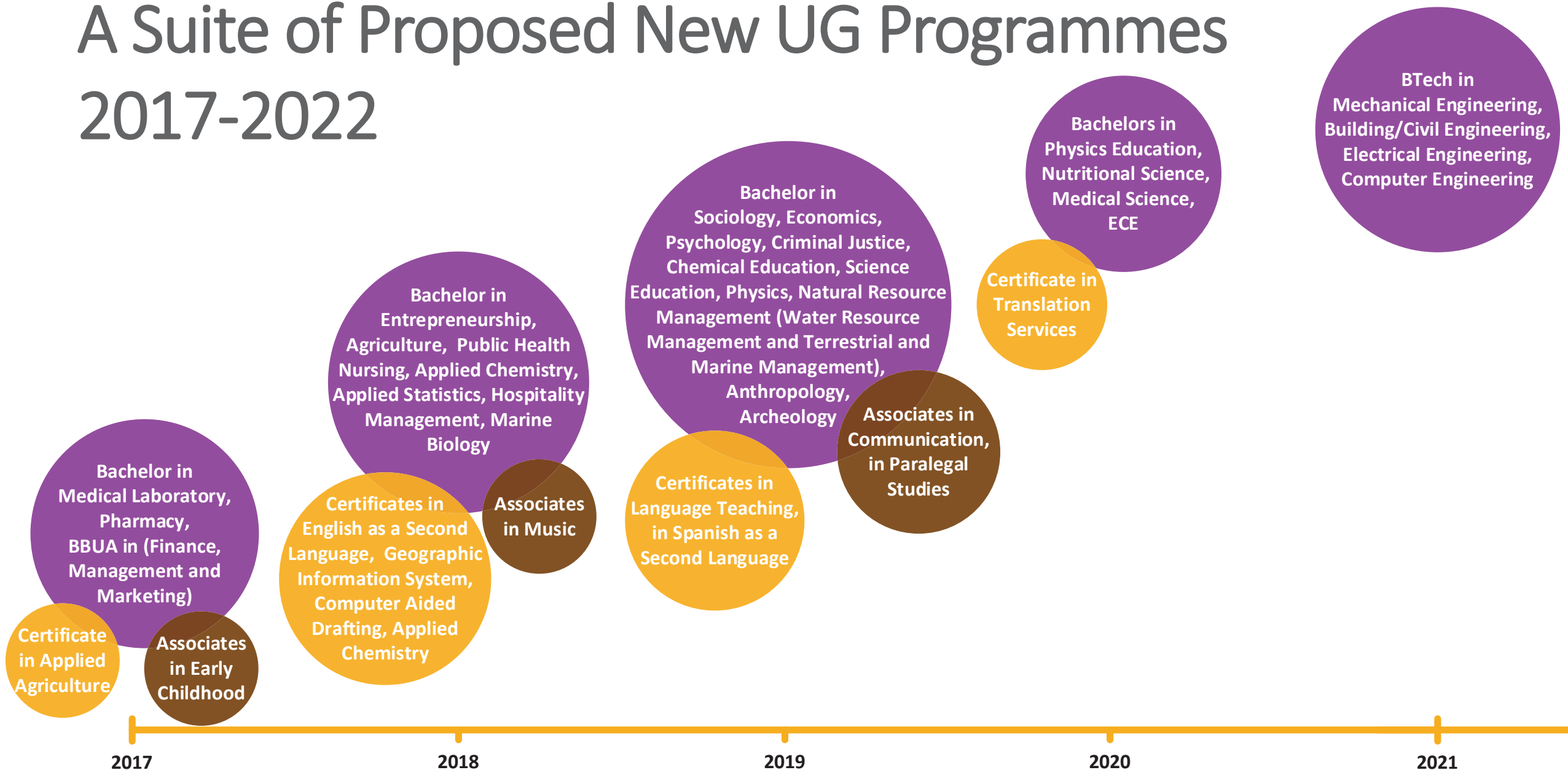
---

To ensure access to the National University, UB will continue to embrace the 2+2 system wherever practically possible and the pedagogy allows for this.

**2 years Associates Degree + 2 years further study  
towards the Bachelors**

This will be supported by Pre-university Development Courses over the next 5 years.

# A Suite of Proposed New UG Programmes 2017-2022

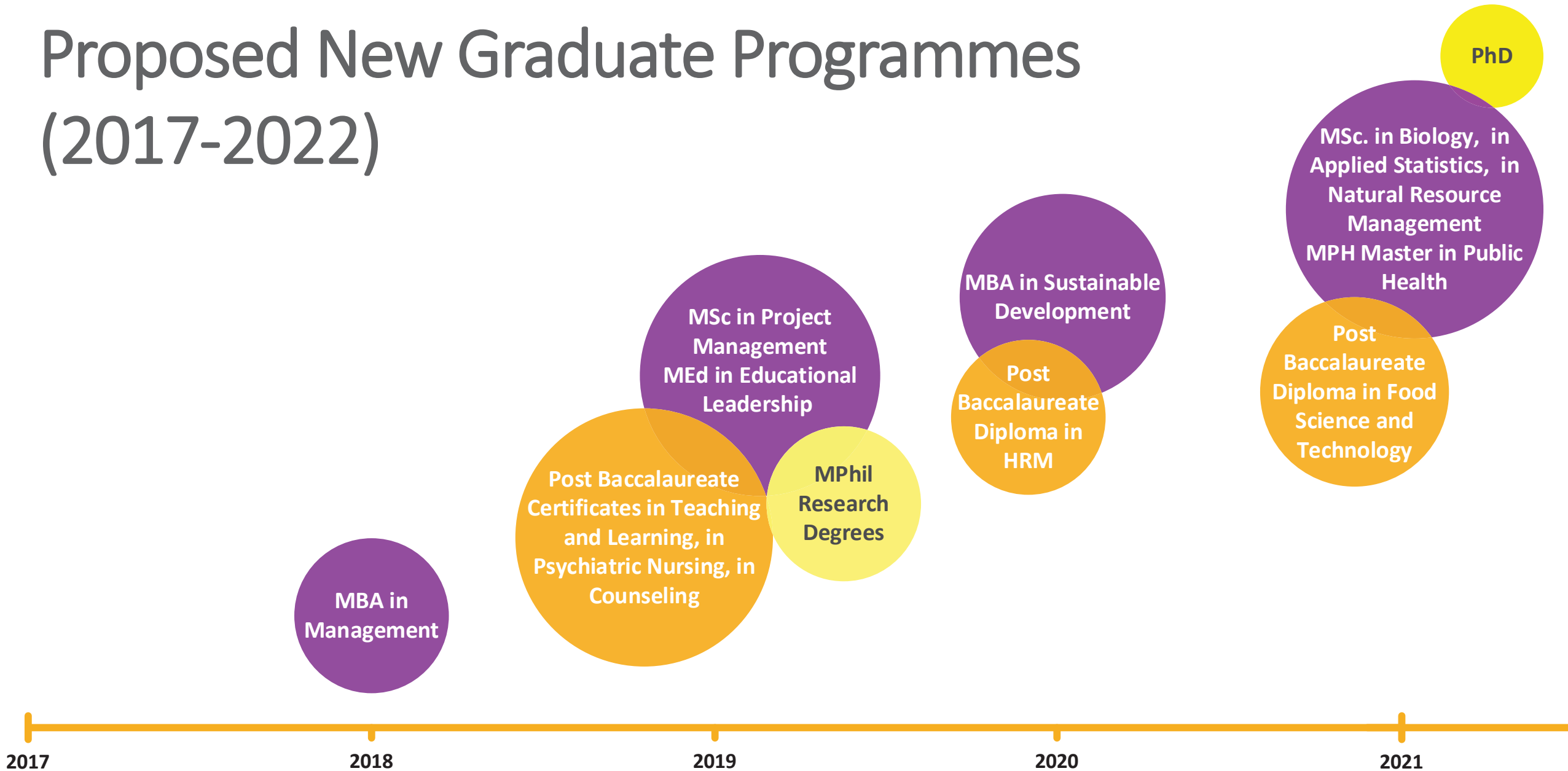


# New/Revised Programs

- Associate in Early Childhood Education
- Certificate and BSc. in Agriculture
- Business Administration: Management, Marketing and Finance
- BSc. in Biology
- BSc. in Applied Statistics
- Certificate in Geographic Information System
- BSc. in Chemistry
- BSc. in Marine Biology
- BSc. in Medical Laboratory Science
- BSc. In Pharmacy
- Master's in Educational Leadership

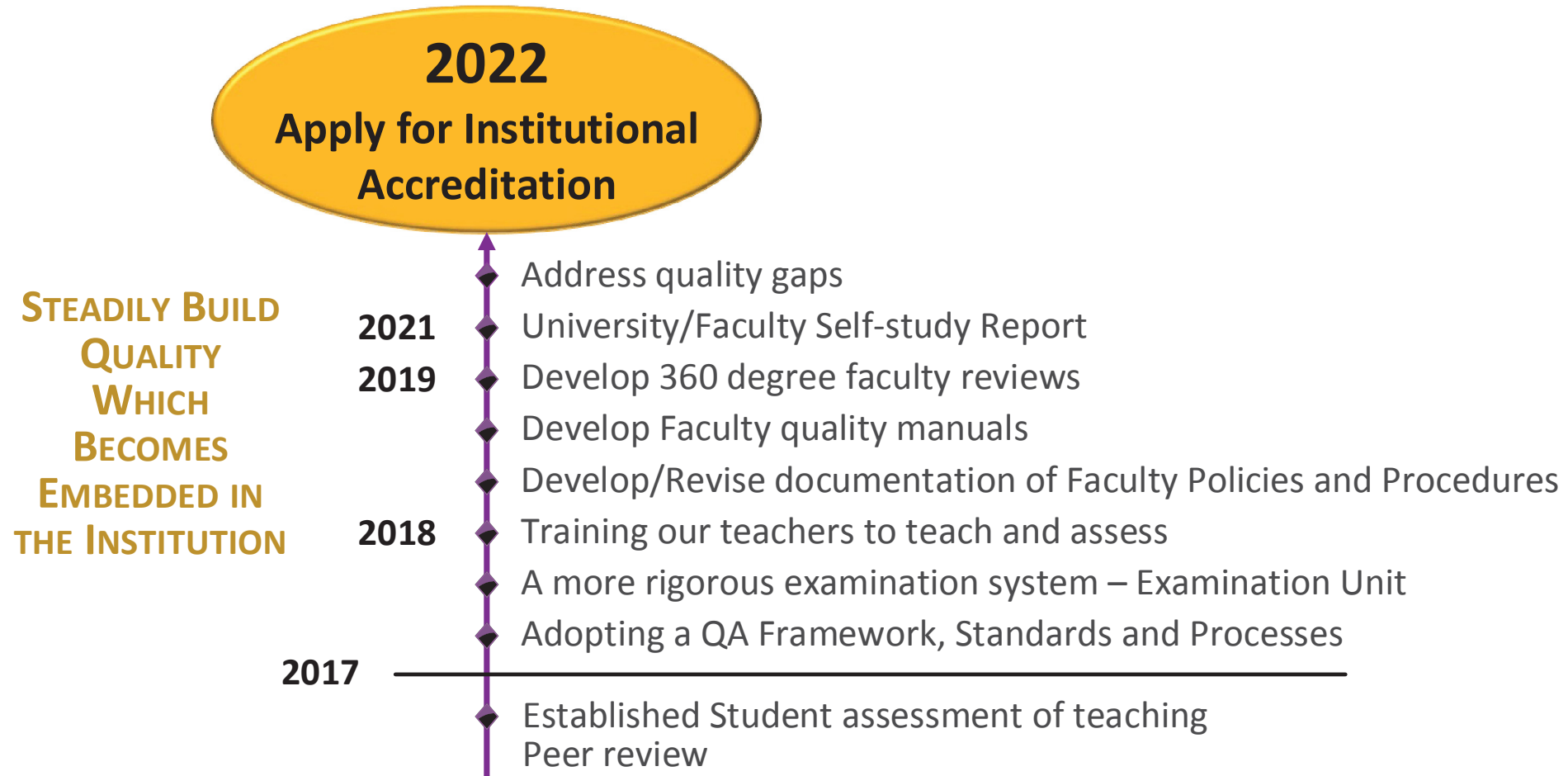


# Proposed New Graduate Programmes (2017-2022)





# Building and Embedding Quality and Moving Towards Accreditation





# Putting Post Graduate Research in the body of our University – the MPhil and PhD Degrees

## RESEARCH ON ALL THINGS BELIZEAN

Research that unearths knowledge of Belize, its challenges, its opportunities so as to shape a developmental pathway that provides solutions to socio-economic and technological questions.

Giving young, outstanding Belizeans an academic, scholarly pathway through immersion in research and as teachers in training – teaching assistants and research assistants. Giving UB Faculty an opportunity to advance their careers through research supervision and publication.

### Effective academic year 2018/19:

MPhil and PhD degrees by research with the requirement of a full thesis and/or peer reviewed publications will be introduced across all Faculties. Research in:

- Education, Arts, Culture, History, Literature
- Applied Sciences and Technology, Natural Environment (marine and terrestrial), Food, Nutrition and Agriculture
- Management, Leadership, the Social Sciences
- Health Sciences



## The Environmental Research Institute

ERI Transformational Lines & Benchmarks – Building Sustainability, Advancing Research

Year	Postgraduate Programs & Research	Private Sector Initiatives
2018	M.Sc. Biodiversity Conservation	Sea cucumber mariculture at Bel-Euro Shrimp Farm
2019	M.Phil. Environmental Studies	Partnerships secured for sustainable agriculture/tourism applied research
2020	1st intake MBA Sustainable Development	2 improved cattle farming pilot projects in large farms
2021	M.Phil.	Increase in bird tour guides through pilot projects
2022	2nd intake MBA Sustainable Development	Wide application of best practices for tourism, fisheries and agriculture

Building national / regional / international partnerships to create a centre of excellence for Environmental-Marine / Terrestrial Research and Outreach



## Regional Language Centre (RLC)

### The Goal

To become over the next 5 years the recognized Regional Centre for Professional language training (English, Spanish) for all of Central America and the Caribbean.

### RLC Services

- Professional Training in Spanish and/or English for non-native speakers
- Translation: Mandarin, Spanish, English

### Undergraduate Programmes

- Certificate in English as a Second Language (ESL)
- Certificate in Spanish as a Second Language (CSSL)
- Certificate in Language Teaching (CELTA)
- Certificate in Translation Services (CETS)

# The UB Central Farm

## Our School of Agriculture in the Cayo District

Training our UB students in the scientific, technological and business principles of agriculture and food production, while developing the necessary farming skills on a commercial farm.

Building local, regional and international partnerships to support food and agricultural training, research, and outreach 2017-2022 in propelling Belize's agriculture



### 2017/18

- Certificate programme developed and initiated at PG Campus
- Rebuilding and strengthening the Associates Degree
- Agribusiness and Livestock Production
- Micro-propagation Lab reintegrated with the School

### 2018/19

- Develop and launch the BSc in Agriculture focused on Climate Sustainable Agriculture
- Farm operations streamlined and measured to support teaching, learning and applied research within a sustainable agriculture context
- Internship farm attachments for our students to support their training

### 2019/20

- Certificate programme to be franchised to High Schools
- Refurbishment of dormitories
- Agriculture Outreach strengthened and demonstrated
- Rental of farm lands to earn income

### 2020/21

- Recruit regional students
- Establish MPhil Research and pursue external Research Funding
- Postgraduate Diploma in Food Science and Technology



# Institutional Advancement Office

- Research and Research grants
- Planning and Development
- Internationalization
- Public/Private Partnerships for Development
- Alumni relationships
- The Endowment Fund, resourcing and managing
- Implement the first UB Presidential Capital Fund Raising Campaign, “Let’s Build UB Together”.
- Land use, planning, development and funding for physical development – faculty/staff and student housing, infrastructure, etc.
- Overseeing income earning operations and opportunities.
- Business Incubation

## **Team:**

Arnulfo Kantun  
Santree Sandiford  
Ricardo Gongora  
Sheena Jackson  
Nectaly Vela  
Dezorie Contreras



# Endowment Fundraising for Scholarships

University of Belize  
**UB**  
 Education Empowers a Nation

## 2nd President's All Inclusive Endowment Fund Fete

A CARIBBEAN LOVE AFFAIR

featuring



**ELJAI**  
BELIZE



**PLUTO SHERVINGTON**  
JAMAICA



**OSCAR B**  
TRINIDAD & TOBAGO



**YOUTH CONNECTION BAND**



**GILHARRY 7**

& MUCH MORE

Saturday  
**September 1, 2018**  
 9:00 p.m. - 2:00 a.m.

Food & Drinks included

Ramada Princess  
 Hotel & Casino

**VIP \$150**    **VIP \$250**

EARLY BIRD SPECIAL - 10% DISCOUNT - RESERVE YOUR TICKET NOW  
 CONTACT THE OFFICE OF THE PRESIDENT | 822-1000 ext 193 or 224

TICKETS ARE ALSO AVAILABLE AT:  
 BELIZE CITY: DIVERSIFIED LIFE SOLUTIONS - Mr. HARVEON PRINCE (Albert St. West) | 227-0623  
 SAN IGNACIO: BECOL OFFICE (at Casacol Rd) | 824-3016

ALL PROCEEDS GO TOWARD STUDENT SCHOLARSHIPS



For more information: +501-822-1000 ext 189    email:presidentsfete@ub.edu.bz



## First Endowment Fund Scholars


University of Belize  
**UB**  
 Education Empowers a Nation

## CORNELIUS CACHO SCHOLARSHIP

FOR UB STUDENTS

**What is the Cornelius Cacho Scholarship?**  
 The Cornelius Cacho Scholarship provides support for full-time students enrolled in the final two years of their undergraduate studies. These scholarships are awarded to students based on financial need and academic excellence.

**About the Scholarship**  
 The scholarship is tenable for two academic years excluding the Summer Semester. The scholarship covers tuition and may include a housing allowance on a case by case basis in the following programs: Agriculture, Biology, Chemistry, Information Technology, Marine Biology, Mathematics.



*Born on October 2nd, 1926 in Belize City, Mr. Cacho was an economist with the World Bank's International Bank for Reconstruction and Development (IBRD) from 1969 to 1989, where he served as an economist, in public sector management, development banking and agricultural development policy specialist. He has a Bachelor's of Science in Economics and a Masters' of Science in Development Economics from the London School of Economics (LSE) where he studied under the tutelage of*

# Study Abroad and Study Tours from/to UB



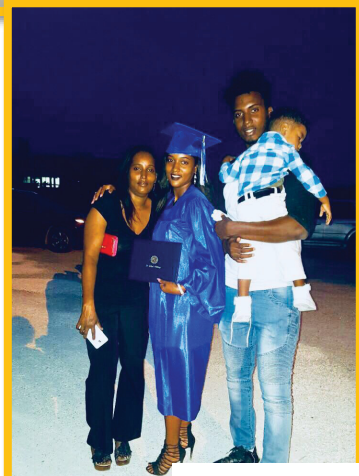
Students from Texas A&M – Kingsville at UB Central Farm



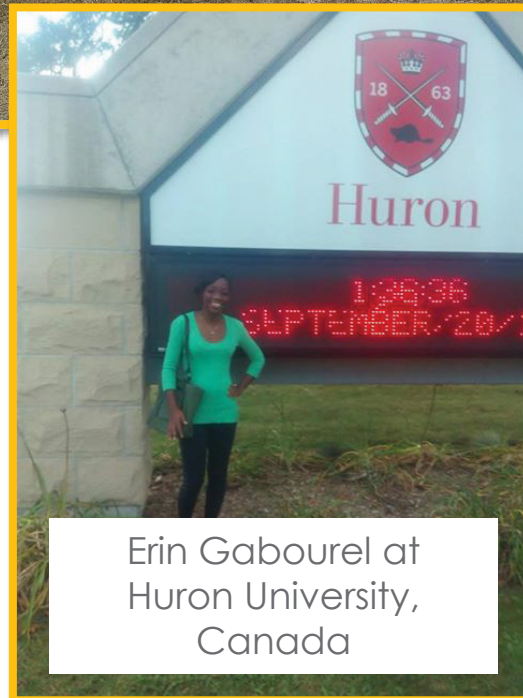
Students from National Tsing Hua University (Taiwan)



Students from Texas A&M International University



Eldon studied a semester at Thompson Rivers University

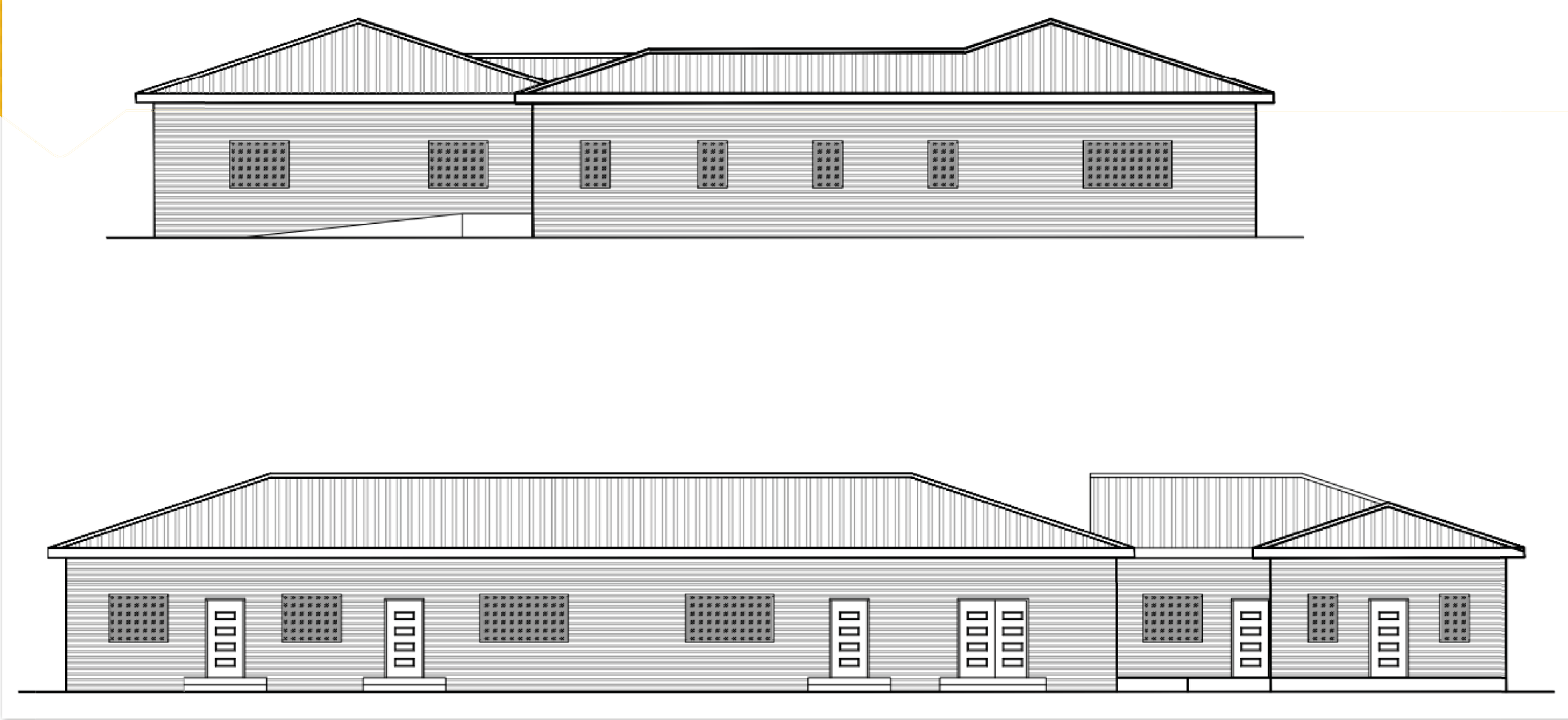


Erin Gabourel at Huron University, Canada



Ashley Middleton at Thompson Rivers University

# Proposed Medical Facility



# Dr. Charles Wallace of UNAN and Dr. George Gough from Belize Medical Council assist in curriculum development re Medicine: December 15-22, 2018



UNIVERSIDAD  
NACIONAL  
AUTÓNOMA DE  
NICARAGUA,  
MANAGUA  
UNAN - MANAGUA



- Belize Medical Council
- Ministry of Education

# Student Services, Facilities – 2018-2020



for International Student Dorms with rooms for visiting  
Faculty  
Investment: \$5.3 M Build + \$2.1 M Outfit = \$7.4 M  
Building is 56,000 ft<sup>2</sup>

# Partnerships for Progress

Level	Areas of Focus
Local Secondary Institutions	<ul style="list-style-type: none"><li>• Giving opportunity to students for entry to UB so as to enhance tertiary enrollment in Belize.</li><li>• Partnering in the delivery of programmes especially in distant communities</li><li>• Training of teachers and administrators – quality enhancement</li></ul>
Regional/International Institutions	<ul style="list-style-type: none"><li>• Partnerships in academic training that lead to the award of certificates/degrees/Post Graduate qualifications etc</li><li>• Collaborate in research/Joint research grants/Joint publications/research infrastructure, external examiners etc.</li><li>• Study abroad tours - Undergraduate/Post Graduate students</li><li>• Sabbatical and Faculty/Staff exchange and development</li></ul>
Private Sector	<ul style="list-style-type: none"><li>• Benefaction/Philanthropy</li><li>• Joint business/capital projects for infrastructure</li><li>• Loans for students</li></ul>

# Partnerships for Progress

Level	Areas of Focus
Local/Regional/International Institutions	<ul style="list-style-type: none"><li>• Research and Development grants</li><li>• Capacity building, loans, scholarships for students, fellowships etc.</li></ul>
The Government – a partnership for the Human Development of Belize	<ul style="list-style-type: none"><li>• Government support for the national University's work, recurrent and capital expenditure, student scholarships and low cost student loans, support for grants from international/regional governments and agencies</li><li>• Training of our Faculty and staff</li></ul>
The Alumni and population as a whole	<ul style="list-style-type: none"><li>• Creating a culture of “giving back”/philanthropy and support for the national University of Belize.</li><li>• Targeted fund raising events and capital campaign etc.</li></ul>

# Some Examples of our Partnerships

Type of Collaboration	Partners	Results
Research	PACT, National Oceanographic Center , CINVESTAV, Department of the Environment, WWF, Coca Cola, BNE, IAE, Costal Zone Management Embassy of Mexico,	Stem Education, Watershed Management, Data Collection, Natural Resource Management , Sustainable Development Binational Conference : cross border issues
Development of New Programs	NICH, UNAN, MOH, UWI, COL , Statistical Institute of Belize, Belize Medical Council, NHI, Ministry of Agriculture	BSc Archaeology, Certificate in Midwifery, BSc Medicine, MBA, MEd, Certificate in GIS, Bachelors in Statistics, Bachelors in Agriculture
Mobility Programs	UQROO, TAMUC, TAMIU, Memorial University, BSU	Student Exchange, Faculty Exchange, Language and Cultural Exchange
National development (opportunities for meaningful impact)	MOH, MFA, UN Groups, EU, Human Development, BFLA , Youth Enhancement Services	ICJ debate, Elderly Care, Teen Pregnancy and Youth Violence, Adolescent Sexuality, Social Welfare, Second Languge Acquisition for Immigrants
Capacity Development, training and Leadership, outreach	UNF, National Oceanographic Center, International Atomic Agency, Lego foundation, Bowen and Bowen, BTL, Social Security, Travelers , BEL, Government of India	Scholarships, Bursaries, Equipment, laboratories, Technology Development, India Belize Center for Engineering
Outreach, Recruitment, Marketing	ITVET, Love FM, BTL, Guardian Newspapers, Local Media, EU	Increased visibility of UB, Access to professional development training across the country





Meeting with  
Bridgewater State University



Meeting with  
Dr. Thomas Guderjan from the  
University of Texas at Tyler (UT Tyler)



DFC:  
Supporting Students  
with Financial Need



CSUCA

Dr. Emilia Hodge visited  
UB on November 6



Presenting Transformational Plan  
to ATLIB



Building Partnership with  
Embassy of ROC (Taiwan)



Binational Seminar with  
Mexican Universities





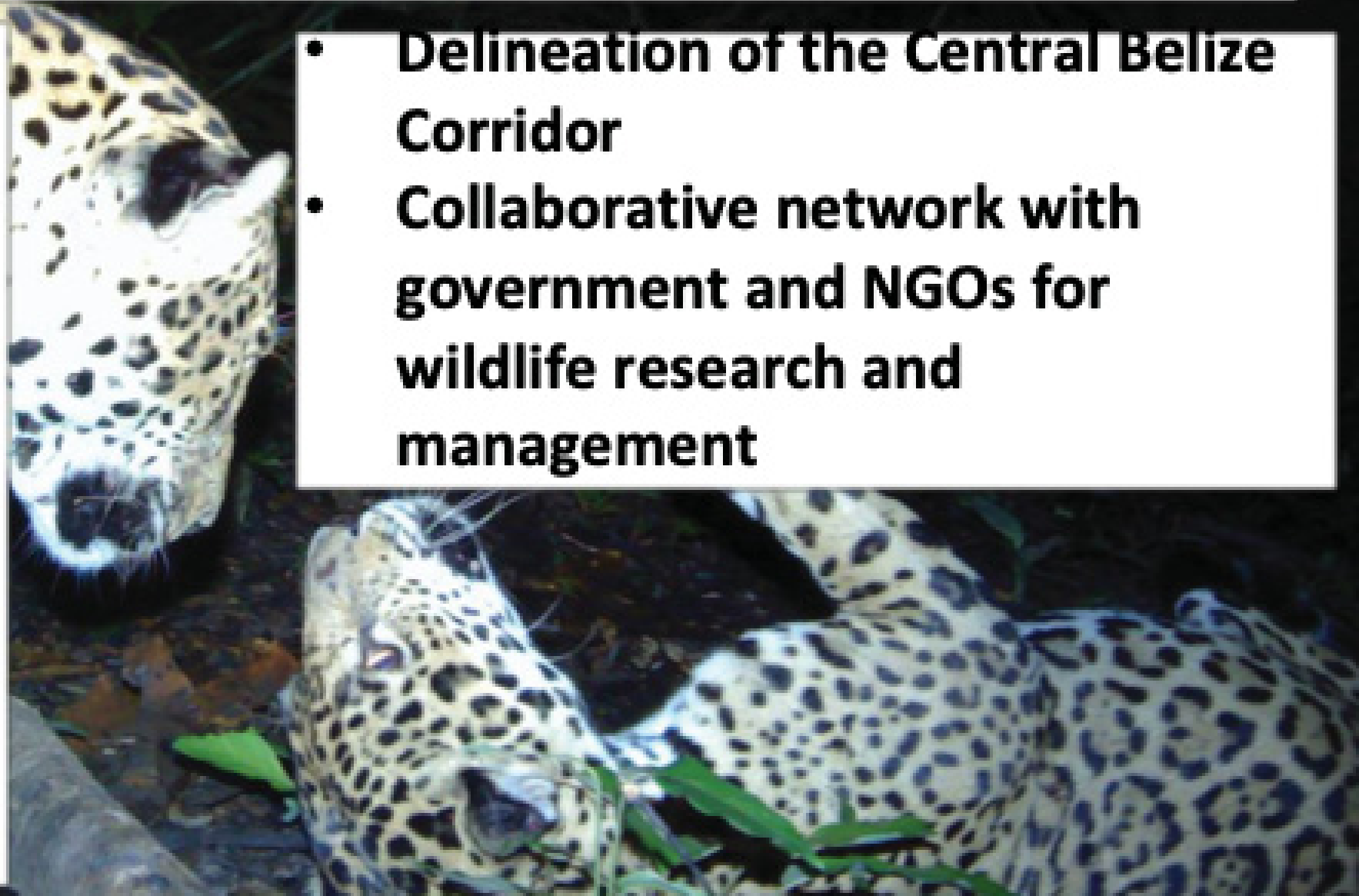
# WHAT WE DO

**UB ERI partners with local and international organizations to conduct research, capacity building and outreach all in support of building scientific capacity for decision making in the management of our natural resources**

## Major Outputs

- Established joint wildlife research and teaching program
- >20 scientific publications on jaguars, prey spp., game meat consumption etc.

- Delineation of the Central Belize Corridor
- Collaborative network with government and NGOs for wildlife research and management



## Major Outputs:

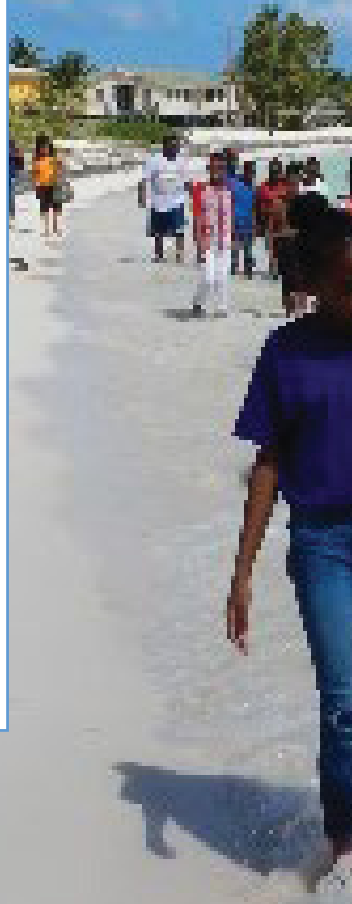
- Long-term jaguar monitoring and bird banding programs at Cockscomb Basin Wildlife Sanctuary
- Scarlet Macaw Conservation Action Plan for Red Bank Village



- Targeted Training
  - Research & monitoring
  - Conflict resolution & negotiation
  - Training of trainers for bird certification program
  - Science communication

# Partnership since 2010

- **National Biodiversity Monitoring Program**
- **National Marine Databases for coral bleaching and fish spawning aggregations**
- **National Research Agenda (environmental and natural resources)**



- **Developed facilities at Calabash Caye for long-term research at Turneffe**
- **Established long-term data sets on ecosystem and fisheries health for the Turneffe Atoll**
- **Guided establishment of the Turneffe Atoll Marine Reserve**
- **Enhanced teaching within the NRM Program through field activities**

# Partnership since 2010



## Major outputs

- **National Protected Areas System Act**
- **National Training Program for Protected Areas Management**
- **Draft National CITES Legislation**
- **Partnership for land purchase and conservation of the Central Belize Corridor and connectivity of Belize's National Protected Areas System**

# Partnership since 2014



## Major Outputs

- **>100 UB Faculty and Staff and Natural Resources Managers trained in Conflict Resolution and Negotiation**
- **Four Conflict Clinics for partners and communities**
- **Six UB Faculty trained as trainers at Syracuse**
- **Training modules designed**

# Partnership since 2016

- Develop strategic partnerships for research with TASA and Bertarelli Foundation
- Developed scientific diving program at CCFS
- Provide training to TASA in fisheries monitoring
- Provided governance strengthening for fishing associations

- Climate change monitoring for coastal ecosystems in Turneffe
- Partnership with TASA on science program for management of Turneffe
- Training of Turneffe tourism and fishing stakeholders
- Developing marine science capacity through MarBio program





# OPPORTUNITIES for COLLABORATION

- research fellows and visiting fellows
- internships and graduate research
- collaborative research grants under sustainable landscapes & coastal resilience thematic areas
- faculty and student exchanges
- joint field courses at the CCFS

# Key Challenges at UB

- Bringing our HR policies and practices to support a modern University.
- Balancing our budget and new sources of income, recurrent and capital
- Aging buildings particularly in Belize City, Central Farm, Punta Gorda and at the Freetown Road, site no longer owned by UB.
- Infrastructure in desperate need of fixing/expansion – buildings, driveways, parking lots, lighting etc at all sites
- A new student/visitor/faculty residence in Belmopan
- Recreational facilities for our students in need of urgent rehabilitation – basketball court at FMSS needs to be covered, a football/athletics field for our students
- **Financial support for our students in need.**

**We need all our stakeholders to support the efforts of our transformation.**

**We are open for business to create win:win partnerships as we strive at UB to build our capacity.**

# Thank You

Thank you Chair and members of COBEC for inviting us to today's conference.

We wish COBEC every success and looking forward to partnering with its members.